



VOYAGER SOPRIS
LEARNING®

a cambium company

DYSLEXIA

Students who struggle with spoken language, reading, spelling, and writing need science-based solutions and timely, explicit instruction.

With the right intervention, every striving reader can conquer reading challenges and succeed in school and life.

RECOGNIZE AND NURTURE

the many talents and skills in every learner.

Turn reading struggles into successful learning experiences with language-based explicit, systematic instruction and solutions featuring a Structured Literacy approach.

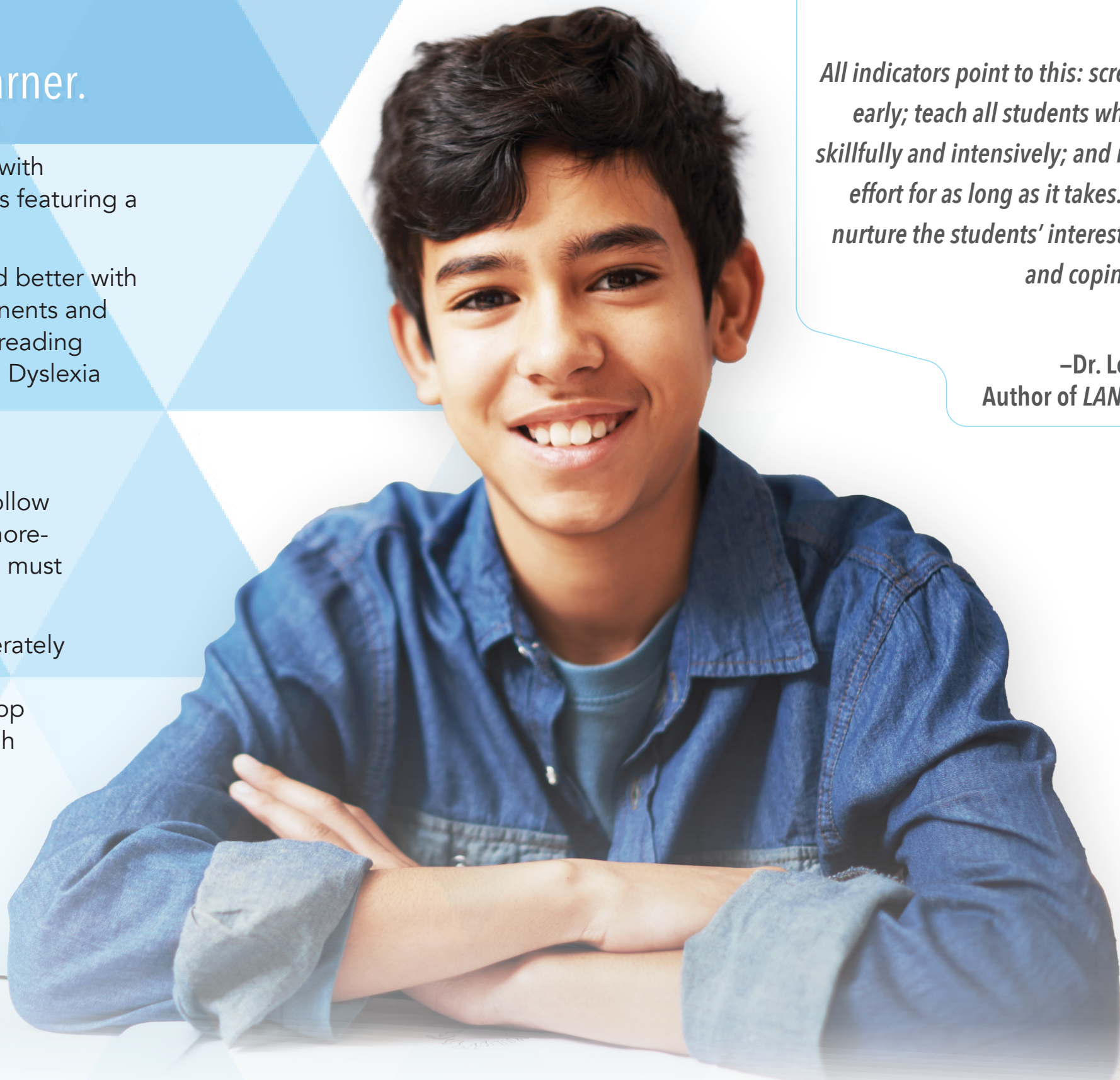
Evidence is strong that the majority of students learn to read better with structured teaching of basic language skills, and the components and methods of Structured Literacy are critical for students with reading disabilities including dyslexia, according to the International Dyslexia Association®.

Structured Literacy:

- **Is Systematic and Cumulative.** Material is organized to follow a scope and sequence that is a progression of easier-to-more-difficult language concepts and structures. Each new step must be based on concepts previously learned.
- **Includes Explicit Instruction.** All instruction should deliberately teach all concepts with continuous student-teacher interaction. It is not assumed students will naturally develop an understanding of these concepts on their own, through exposure to text, or through incidental instruction.
- **Features Diagnostic Teaching.** The teacher must use diagnostic assessments to carry out individualized instruction. Both formal and informal assessments are used for screening, progress monitoring, and educational diagnostics.



Our literacy resources are all based on the science of reading and follow these tenets of Structured Literacy • go.voyagersopris.com/dyslexia



”

All indicators point to this: screen students early; teach all students who are at risk, skillfully and intensively; and maintain the effort for as long as it takes. Meanwhile, nurture the students’ interests, aptitudes, and coping strategies.

–Dr. Louisa Moats,
Author of *LANGUAGE! Live*

TEACHING AND LEARNING SOLUTIONS

That Address Key Elements and Principles of Structured Literacy



LANGUAGE! Live® is a comprehensive literacy intervention for struggling students in grades 5–12 that practically applies research about literacy and adolescent learning within a systematic and effective program. By using a blended approach of online and teacher-guided instruction, *LANGUAGE! Live* instruction simultaneously reinforces the literacy foundations that students need while strategically engaging students with authentic text to accelerate them to grade-level proficiency.



Voyager Passport® is an evidence-based reading intervention that targets the priority skills and strategies learners need to be fluent, on-level readers. Through a blended, teacher-led approach, students receive comprehensive, explicit, and systematic instruction in the five essential components of reading, plus language and writing.



This powerful research-based, specialized program is ideal for students who struggle reading long, multisyllabic words and comprehending content-area text. With explicit, systemic, teacher-led instruction, this intervention gives students new skills to unlock grade-level, content-area text.



Acadience® Reading K–6 is a universal screening and progress-monitoring assessment solution that measures the acquisition of early literacy skills from kindergarten through sixth grade. Acadience Reading K–6 helps identify students who need additional support and uncovers which early literacy skills to target for additional instruction.



Acadience® Rapid Automatized Naming (RAN) is a brief assessment that can be used with *Acadience Reading K–6* to screen students for reading difficulties such as dyslexia.



We are here to help! Learn more about our reading solutions and **how you can help** every student achieve reading success.



For more information about the International Dyslexia Association's recommendations, including the full definition of the Structured Literacy approach, visit: dyslexiaida.org/effective-reading-instruction

Just the Facts...Information Provided by the International Dyslexia Association. (2015). Retrieved from <https://app.box.com/s/hvjb2c4dctr2jrsrpmi6kqg9f4k1bjsl>



go.voyagersopris.com/dyslexia
800.547.6747



VOYAGER SOPRIS
LEARNING®

a cambium company

386193

ISBN-13: 979-6-7653-0281-1



9 798765 302811 >