

ClearSight Assessment, Helping to Close the COVID Gap: A Strategy for Winter and Spring 2021

Students have faced multiple challenges during fall 2020. Winter is when educators typically begin to look closely at where students are in their knowledge of state standards and plan to instruct and re-instruct in areas of importance before spring summative tests. *ClearSight* can quickly, in one class period or less, provide valid and reliable data to help educators gauge whether or not students are prepared for summative state assessments.

ClearSight

The vision to guide student performance.



VOYAGER SOPRIS
LEARNING®

a cambium company

Using *ClearSight* Interim Assessments

Educators can administer *ClearSight* Interim Assessments in early winter to measure student learning of grade-level standards, then again after a few months of instruction has occurred. After the second administration, reports showing students' changes in performance will be available and will inform educators and students about their readiness for the summative tests.

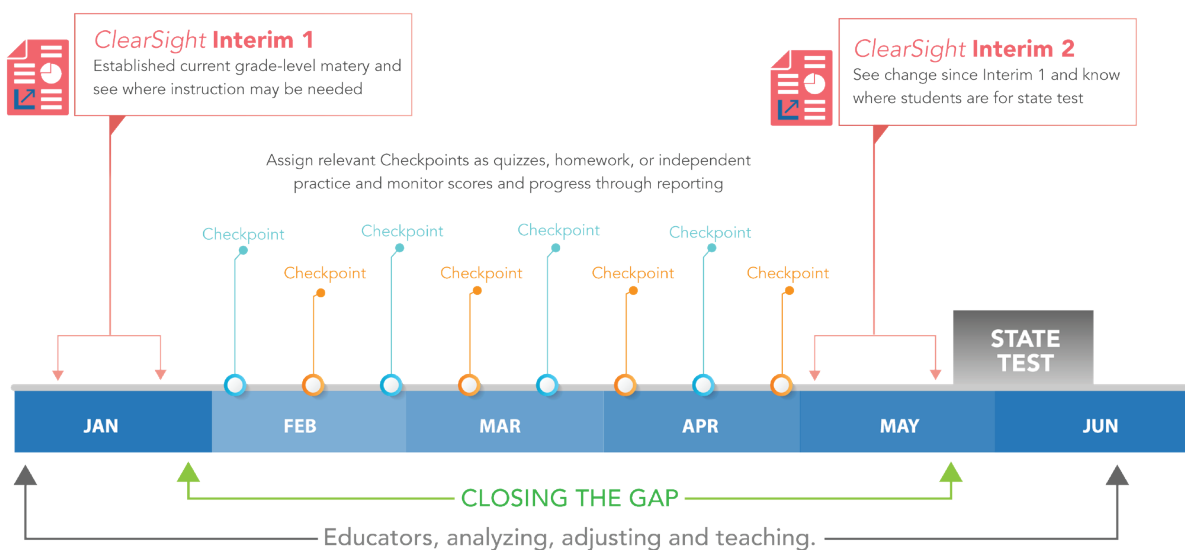
Interim: ELA Grade 4: Student3081, Student3081

Date	Test Label	Test Reason	Overall	Overall		Language	Listening Comprehension	Reading Informational Text	Reading Literature	Writing
				My Student's Score	My Student's Performance					
01/08/2020	Interim: ELA Grade 4	Unassigned	Overall	353	Approaching Proficient	Language	Listening Comprehension	Reading Informational Text	Reading Literature	Writing
04/30/2020	Interim: ELA Grade 4	Unassigned		513	Highly Proficient					

Using ClearSight Checkpoint Assessments

Between Interim Assessments, or anytime they are useful to educators, Checkpoint tests can be used to provide standards-level mastery information for Mathematics and English Language Arts topics. These are short forms that take 30 minutes or less to administer, and there are multiple forms of each so they can be used as pre/posttests, quick quizzes, or any other way educators want to use them.

ClearSight, Helping to Close the GAP



Fast Results

All ClearSight tests are automatically scored and reported, so you can see results as soon as students submit tests. No grading is needed, just test and review results.

Flexible Administration

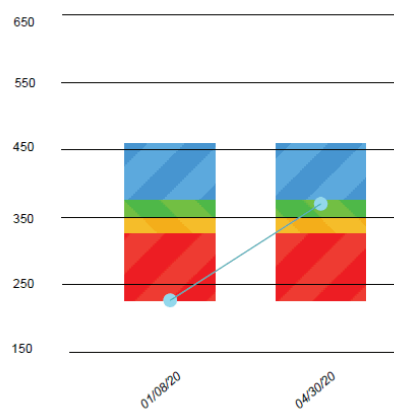
All ClearSight tests can be administered as supervised tests or independent assignments for students. Also, you can administer in person, remotely, or both at the same time.

Easy for Students

No downloads or special software required. ClearSight tests use an administration-generated URL, where students log in and take the test.

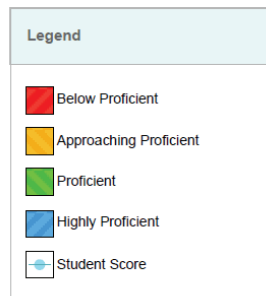
Reporting—Seeing the Gap Closing

ClearSight provides longitudinal reports to help track student growth across multiple related assessments or across multiple test opportunities of a single assessment. Educators can see how performance improved for a student or group of students across grades or within a grade. These reports are available immediately after testing is completed.



Longitudinal Trend Chart Information

The chart below reports your child's performance over time. The shaded areas in multiple colors indicate the scale score range in each achievement level. Each mark on the graph represents your child's score and indicates whether he or she met the standards for that year.



Date	Test Reason	Test Label	Scale Score	Performance Level
01/08/2020	Test One	Interim: Math Grade 4	227	Below Proficient
04/30/2020	Test Two	Interim: Math Grade 4	370	Proficient