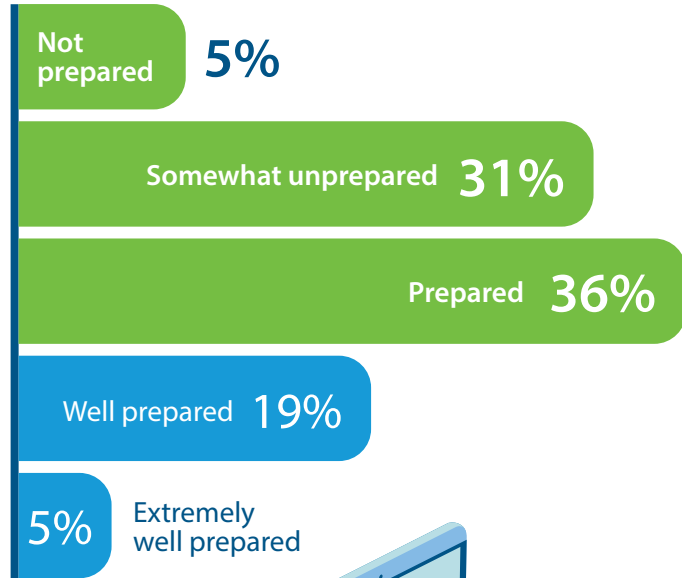


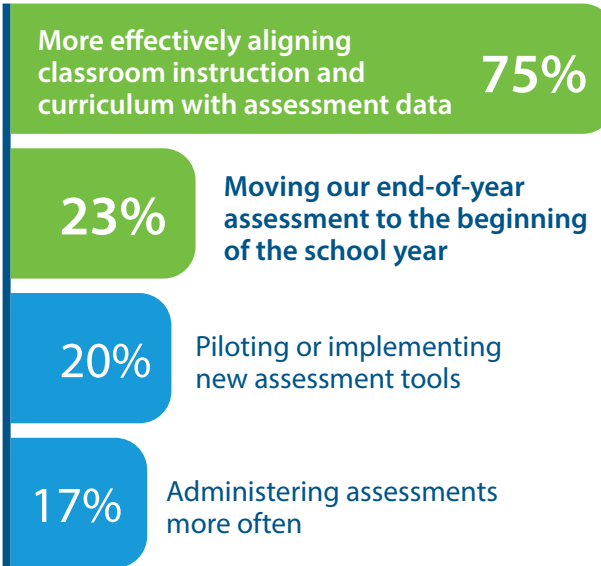
NEW SURVEY EXPLORES LEARNING LOSS AND ASSESSMENT AFTER COVID-19 SCHOOL CLOSURES

District Administration partnered with Voyager Sopris Learning to develop and deploy a survey of school administrators in May 2020, asking them about their expectations for student learning loss after the school closures caused by COVID-19, and their assessment strategies for when students return to schools.

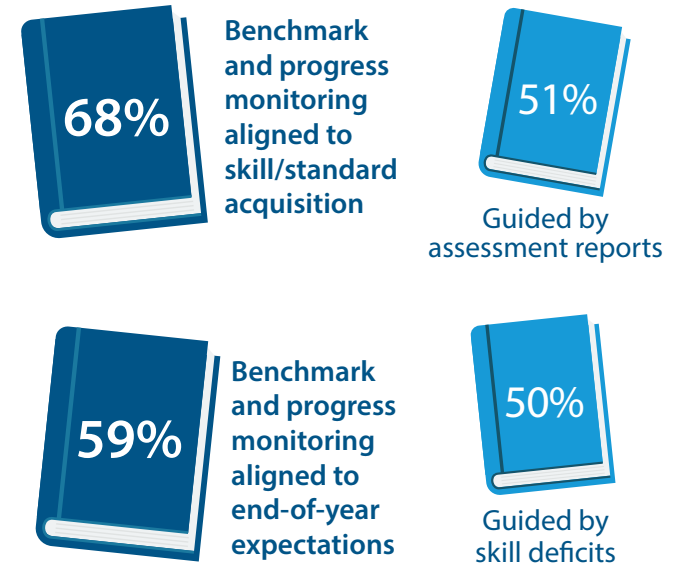
2. How prepared is your district with instructional and professional development tools to equip your teachers to address academic gaps due to the loss of instructional time?



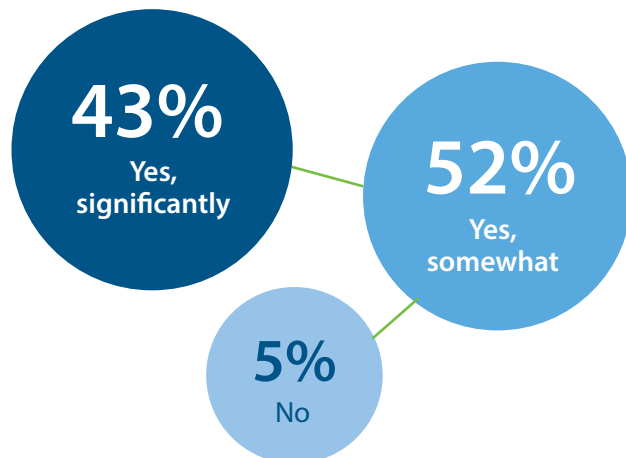
3. Which assessment strategies is your district considering to address any learning loss?



4. Struggling readers will need even more support than ever before. How will you assess to identify what instruction is needed?



1. Do you anticipate students experiencing learning loss in your district, because of school closures due to the COVID-19 pandemic?



How the Right District Assessment Can Help Identify Learning Loss

Without data from last spring, school leaders will need to determine their students' starting points for the 2020-2021 school year. Using the *ClearSight Interim assessment* from the previous grade will provide the closest data available to fill the gap when students did not take the state summative assessment. ClearSight will provide the necessary data to plan instruction for the new school year.

ClearSight interims are adaptive, cover the breadth of individual state standards with each administration, contain items previously used on state summative assessments, and are delivered on the same assessment platform used in 28 states.